

Articles in the Newsletter

- The new boating season
- Security Gate Access
- Mooring Tariffs
- Vehicle Stickers
- Fun Day
- Boat Sales
- A contribution from Bruin



The new boating season starts

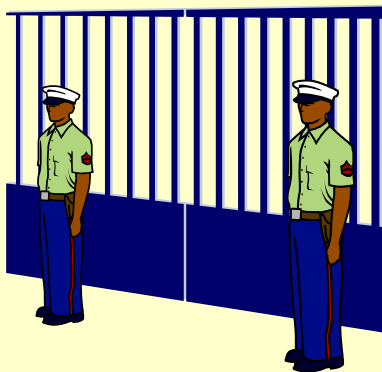
Well, winter is over (we hope) and it is time to start brushing away the cobwebs from your craft. The new boating season is upon us and we look forward to seeing more berth holders at Pyrford Marina.

These newsletters provide you with important information, dates for your diary, and at last, some input from a berth holder. Thank you Norman & Julie - NB Bruin

This is also the time of year when the marina office is busy raising the new mooring contracts and invoices, with Mark and Matt carrying out the early servicing of your craft.

There is VERY IMPORTANT information later in this newsletter about contracts, gate codes, etc, so please read it.

THESE NEWSLETTERS ARE NOT JUNK OR SPAM MAIL.



Security Gate Access

You may have noticed that the security gate keypads have been changed.

We had a very temperamental keypad that seemed to work for some people but not others.

Therefore it was necessary to replace that keypad, and during the process of identifying a suitable replacement, we have replaced both keypads that have an integral *Proximity Reader*.

Instructions for the use of the keypads is attached to the keypad post, and the security code remains the same as issued on 1st February 2011.

They are also slightly easier to use in the dark as the keypad is illuminated.

All craft in the marina will be issued free of charge with one *Proximity Tag*, which, when held close to the keypad, will operate the gates. (No code required).

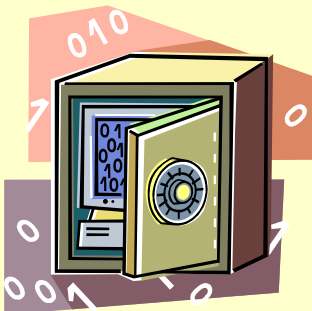
We kindly ask that you collect your proximity tag from the marina office.

Please ensure that you do not lose them. If you do, inform the marina office as soon as possible so that the tag can be disabled.

There will be a charge of **£10** to replace a lost tag.

Additional tags can be purchased for £10.

If you decide to sell your craft, or move to another marina, please return your tags to the marina office so that they can be re-issued.





Mooring Tariffs & Contracts

We had a good take up of the advance purchase of moorings last year at the then 17.5% vat rate.

On average, those that took advantage of the offer saved in the region of £65.00 for a year.

Sadly the vat rate has now risen to 20%.

We regrettably have to announce that the mooring fees for the next mooring season have risen by approximately 4% on the pre-vat or net mooring fee.

New Mooring/Licence agreement forms will be issued with your mooring licence.

Please ensure that you sign BOTH copies of the agreement and return these to the marina office in the prepaid envelope. You will be sent your copy by return.

PLEASE NOTE:

All berth holders **MUST** have a signed agreement in place for any mooring period.

If you currently pay your mooring fees by monthly direct debit, an additional form requires your signature that must also be returned to the marina office.

Fun Day 2010 images



Motor Vehicle Stickers

Could we ask whether you are displaying a Tingdene Parking Sticker in your car windscreen.

The stickers are there to show staff that your vehicle belongs in the marina, especially over night.

If your vehicle does not have one, then please ask in the office for a vehicle sticker.

Why do we need these?

During the warmer months, we have a number of vehicles that should not be parked in the marina. With these stickers in the window, your vehicle will not be clamped.

Fun Day July 2011

The family fun day last year was a huge success, and this year we hope that we can make it better again.

For this to happen, we need a few things:-

1. You and your Crew
2. Really good fancy dress
3. Return the enclosed slip to book places

Please remember that the family fun day is

FREE just bring your own drinks.

We intend to have Music, a caribbean spitroast, and some games. Of course, we do hope that you will participate in the fancy dress competitions.

The theme for this year is:

MAD HATTERS TEA PARTY

So get those thinking 'hats' on to win the prizes.

Saturday 16th July 2011
Midday til Late

Boat Sales & Brokerage

We are delighted to announce that Tingdene Boat Sales Ltd have been appointed Sea Otter Aluminium Alloy Narrow Boat as well as Rodman agents for the southern area of the UK.

We have just finished showing three boats at the Boat & Caravan Show at the NEC Birmingham. This was as usual a very busy show which we are sure will help launch our new product range.

If you would like to view the new Sea Otter 36HSE please let me know and we can arrange a viewing for you.

Much to my surprise the Boat Sales at Pyrford during the start of 2011 has been rather brisk. We have so far taken five deposits on boats on our brokerage list. This is very encouraging, with both the financial and weather climates not exactly in our favour.

We are also starting to see more potential purchasers visit the marina as well as the brokerage boats out on the River Wey. Some prolonged warm weather would help us all.

If you are thinking of either selling your current craft or buying a different boat then please let me know so that we can discuss the best way to achieve your goals.

Please call me on 01932 343275 or email peter@tingdene.net.

I will also be delighted if you just want to call in to my office which is now the first office in our marina building (as you drive towards the dry dock from lock lane entrance). As usual I am generally on site Thursdays, Fridays, Saturdays, Sundays and Mondays but it is often best to ring first to make sure I am not out on a boat demonstration or boat show when you wish to speak to me.

Kindest regards

Peter

Contribution from NB Bruin

Our Extraneous Voyages

My Wife, Julie, and I have been very fortunate in being able to explore most of the inland waterways in England and Wales, initially in hire boats and subsequently in our own canal boat Bruin. In 1991 we undertook a 1,000 mile voyage from our home base Pyrford Marina, the most southerly waterway on the connected system, all the way to Ripon in Yorkshire, at that time the most northerly point on the connected waterways. This was before the extension into the old canal basin in Ripon itself was restored. York is a lovely City, which prior to my long distance walk in 2009 I had only visited on two occasions, both being by canal boat, the first in a hire boat from Sowerby Bridge and the second on Bruin. As you may appreciate the voyage on Bruin took most of the summer to achieve.

However here I recount one of two more adventurous voyages that have been undertaken on Bruin, the two I had in mind were on the Severn Estuary from Bristol to Sharpness, rather than a trip to the River Medway organised by the St. Pancras Cruising Club. These adventurous escapades I usually undertake with my friend Vince Locatelli, my wife, Julie, having a greater sense of self preservation than myself, prefers to meet us by train after the transit of these sea passages.

1993 was the year Bruin sailed the Severn Estuary and what a wonderful experience! As with all sea passages you have to get the weather right, in the case of the Severn Estuary it is essential to employ the services of a Pilot who knows those treacherous waters. With the right weather window we left the safety of the river lock at Bristol Floating Harbour and headed downstream on the ebb tide along River Avon down to Avonmouth where we turned left and headed for Portishead to await the flood tide to carry us up to Sharpness Docks. Now in those days the Marina at Portishead didn't exist and the old docks were derelict, so it was necessary to moor by the jetty on what we hoped would be a flat area of mud when the tide went out. We moored as instructed, putting out our anchor at the bow and a mud weight at the stern, but as the tide went out the anchor did not hold so we slid towards the heavily barnacled jetty; fortunately the mud weight stayed put. Even so it was a close call not to have the cabin sides damaged by the jetty. The main cause of the boat moving on the mud was the old lock gates of the docks were leaking and creating a river of water washing us onto the jetty, so it was a very anxious time.

We had left Bristol on the early morning tide, so had to await the arrival of the flood tide that afternoon. Remember that the tides in that area of the Severn have the second largest variation in the world, in this instance some 40 feet between high and low water. With the start of the flood tide in the early afternoon, the Pilot duly arrived, climbing down the ladder from the top of the jetty to where we were moored; we raised the anchor and mud weight and headed up the estuary at great speed on what must have been at least a ten-knot current. It was a beautiful sunny day with good visibility with very little wind, perfect sailing conditions for a narrow boat. The second Severn Road Bridge was being constructed, just the support piers being built, so there was only the original road bridge to sail beneath. We motored through some very rough water, which gave the impression of rough water over rocks. Another feature is an area where the current turns back on itself, so the ten knot current on which you are being swept along is suddenly alongside you going in the opposite direction, quite an alarming feature! Some coasters have been caught in these currents and been turned completely around.

The entrance to Portishead Docks is very narrow, protected by an upstream and a downstream jetty either side of the entrance. You have only one chance of getting into the entrance, for with a ten knot current up your stern if you miss it there is no way a narrow boat can go against the force of that current. Perhaps you appreciate the need to have a pilot on board. We safely moored overnight in the docks at Portishead and the next day saw our Pilot bringing into the Docks a small coaster, quite a contrast to our small narrow boat!

Vince and I enjoyed a leisurely trip up the Gloucester Sharpness Canal and the River Severn to Worcester where Julie arrived by train to join me, and then Vince headed back home.

Just a quirky thought with Christmas fading into our memories, I was reminded of an incident last December at British Airways Check in Desk at Heathrow Airport where a passenger was surprised to see mistletoe hanging over the desk. He enquired of the check in clerk why there was mistletoe hanging there and was told, "That's so you can kiss your luggage goodbye!"